



STANDARD ROUND MODULE OPENER

U.S. PATENT APPROVED 9/21/11
14 CLAIMS AWARDED

MODEL RMO-20



ADVANTAGES:

- *One Operator*
- *80-100 BPH capacity*
- *Fits over most feeder beds*
- *Simple to install & operate*
- *Belt Safety factor = 10 to 1*
- *Priced well below competitors*
- *Gin Friendly with Standard Components made in the USA*

FEATURES:

- *Heavy duty belts conform to round modules thus keeping cotton dense yielding consistent feed rates*
- *Belts tilt up in feed position to form side walls preventing spillage*
- *Driven by (2) 5 HP gear motors & (1) 15 HP pumping unit*
- *Heavy duty frame compensates for off-center loads*
- *Blowout system prevents cotton build-up underneath belts*
- *Optional RFID tag reader locates inner tail virtually eliminating the possibility of plastic contamination*
- *Other styles available to handle modules crosswise*

COTTON MACHINE WORKS, LLC

Tel: (229) 273-1374 Cell: (229) 938-4670 E-Mail: c990@bellsouth.net

www.cottonmachineworks.com

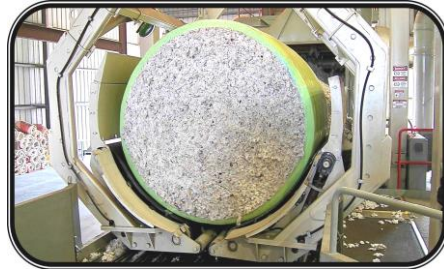
MOD ZILLA

STANDARD ROUND MODULE OPENER

U.S. PATENT APPROVED 9/21/11
14 CLAIMS AWARDED



#1 Arms Open/Convey Module In



#2 Arms Close/Rotate/Locate Inner Tail



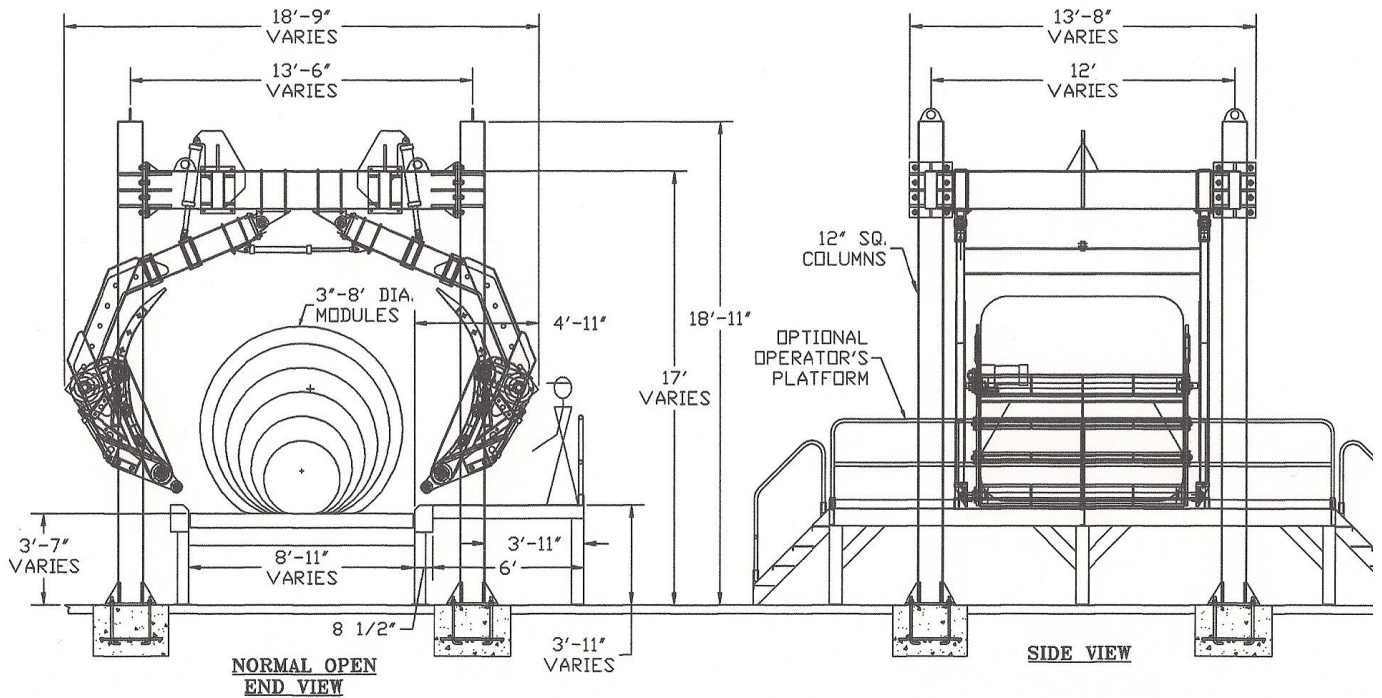
#3 Cut Wrap Thru Slot



#4 Rotate/Remove Wrap



#5 Belts Tilt up to Convey Module Out



COTTON MACHINE WORKS, LLC

Tel: (229) 273-1374 Cell: (229) 938-4670 E-Mail: c990@bellsouth.net

www.cottonmachineworks.com