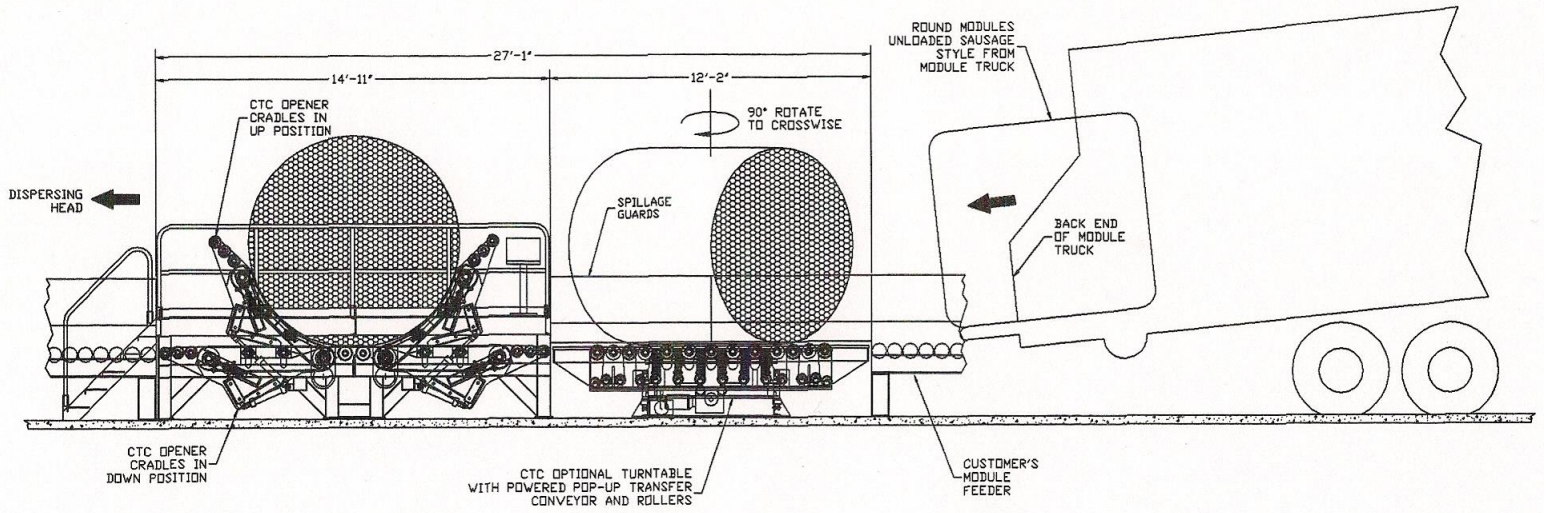


# MOD ZILLA

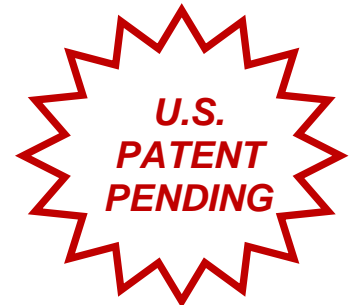
## CROSSWISE ROUND MODULE OPENER



### MODEL RMO-20CW

#### ADVANTAGES:

- *Rotates sausage style modules to crosswise*
- *Eliminates the need to widen or replace existing narrow feeder beds*
- *Processes sausage, crosswise or regular modules*
- *Far Less Spillage than sausage style unwrappers*
- *Single Operator*
- *Requires no special foundation*
- *Heavy duty belts conform to round modules thus keeping cotton dense yielding consistent feed rates*
- *Heavy duty frame*
- *Priced complete including electrical control*
- *Field service support*
- *Simple to install & operate*



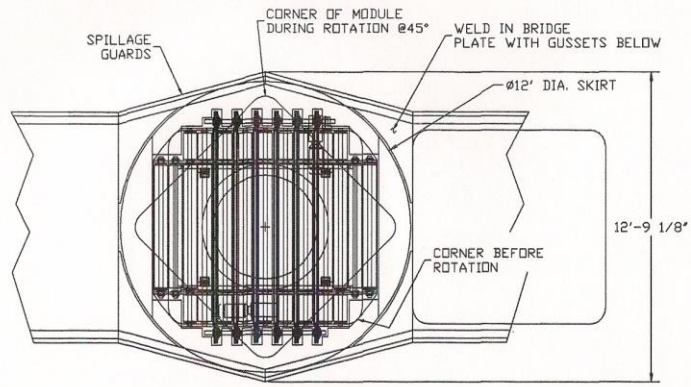
#### SPECIFICATIONS:

- *Opener Driven by (2) 5 HP motors & (1) 15 HP hydraulic pumping unit*
- *Turntable Driven by (3) 3 HP motors*
- *Optional RFID tag reader locates inner tail virtually eliminating the possibility of plastic contamination*
- *80-100 BPH capacity*
- *Belt Safety factor = 10 to 1*
- *Gin Friendly with Standard Components made in the USA*

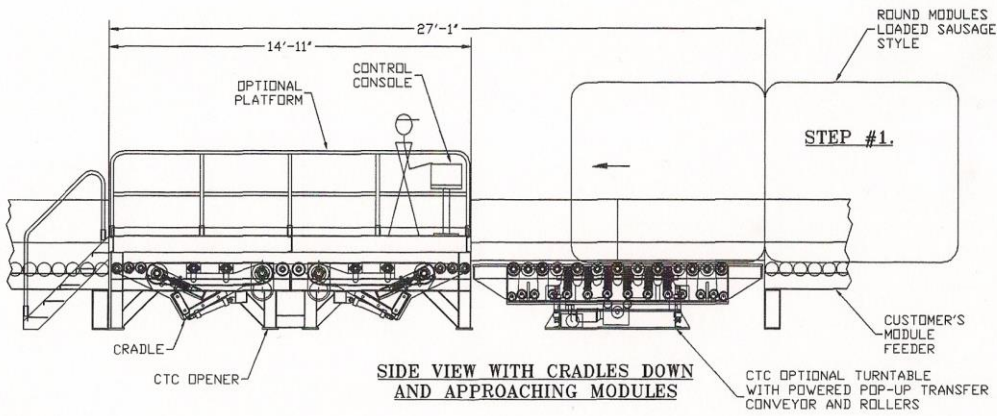
## COTTON MACHINE WORKS, LLC

Tel: (229) 273-1374 Cell: (229) 938-4670 E-Mail: c990@bellsouth.net

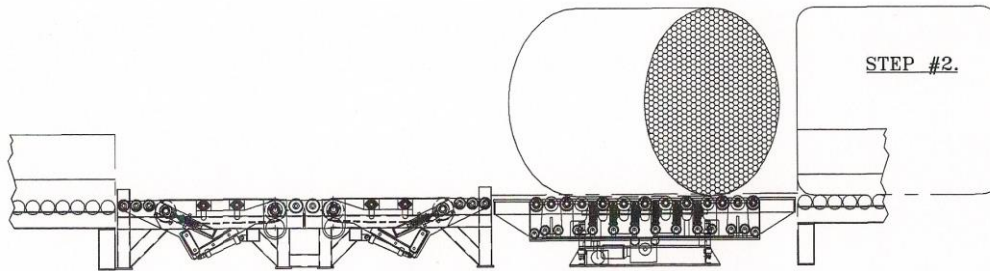
www.cottonmachineworks.com



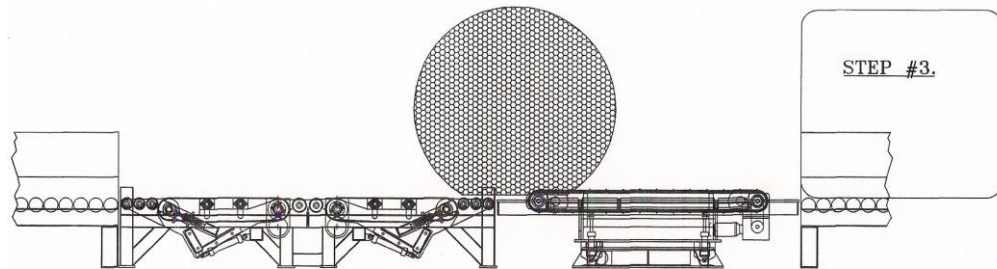
**TOP VIEW OF TURNTABLE WITH SPILLAGE GUARDS**



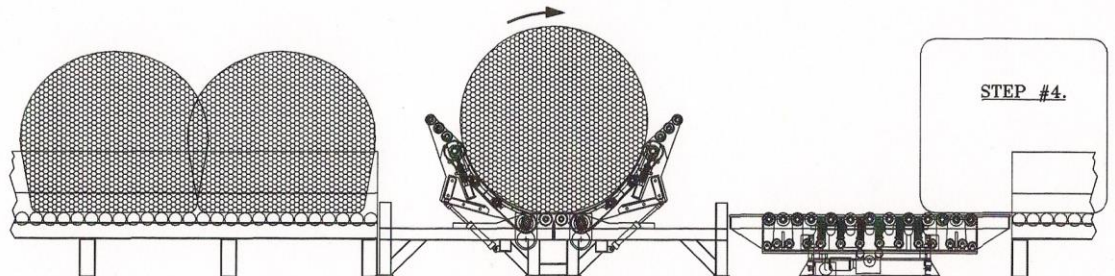
**SIDE VIEW WITH CRADLES DOWN AND APPROACHING MODULES**



**TURNTABLE & POP-UP CONVEYOR ROTATING MODULE (SPILLAGE GUARD & PLATFORM NOT SHOWN)**



**MODULE TURNED CROSSWISE WITH POP-UP CONVEYOR UP & MODULE TRANSFERRING TO OPENER**



**MODULE TRANSFERRED TO OPENER, CRADLES UP ROTATE & SCAN MODULE FOR INNER TAIL. STOP. MANUALLY SLIT COVER ON TOP OR BOTTOM. ROTATE & REMOVE COVER. POP-UP CONVEYOR DOWN & TURNTABLE ROTATES BACK TO RECEIVE ANOTHER MODULE**