



U.S. PATENT PENDING

## REMOVES WRAP FROM BOTTOM OF MODULE



**SIDE VIEW WITH KNIVES ENGAGED**



**SIDE VIEW OF WRAP REMOVAL**

### ADVANTAGES:

- *Opens 4 modules directly from module truck*
- *Reduces labor to 2 employees including operator*
- *Frees up handling equipment & employees*
- *Color sensors prevent contamination from wrap*
- *Easily added to end of unload bed or can be mounted between feeder beds*
- *Processes modules end to end which is most efficient and consistent feed method*
- *Unloads rectangular and round modules*
- *Unwraps without flipping or turning the module thus maintaining original shape and density*
- *Sweeper removes stalks and mud from bottom of round module*
- *Ships with mechanical components assembled*
- *Gin Friendly with Standard Components made in the USA*

### SPECIFICATIONS:

- *Driven by (1) 7 ½ HP motor with gear box & (1) 3 HP motor with gear box*
- *Automatic knives slit 4ft.-8ft. dia. Modules*
- *Manual height adjustment to match trucks*
- *Push button station with touch screen*
- *Variable frequency drives and PLC controls*
- *Safety mats, beacon and light curtains help protect operator from injury*
- *Pneumatic system includes air cylinders, valves, manifolds, regulators, gauges, fittings, hoses, and filters*



### OPTIONS:

- *Reclaiming belted conveyor system removes bottom wrap & loose cotton from underneath machine automatically*
- *Operator Platforms assists with wrap removal & locating back end of trucks*

## SKINNER MODEL SK20 ROUND MODULE OPENER MFG BY COTTON MACHINE WORKS, LLC.

DESIGNED BY CTC DESIGN, INC.

MAILING  
P.O. BOX 4211  
CORDELE, GA 31015

Tel: 229-273-1374  
Fax: 229-273-4343

SHIPPING  
106 N. 7th ST.  
CORDELE, GA 31015



# FEATURES

"SMART TECHNOLOGY"

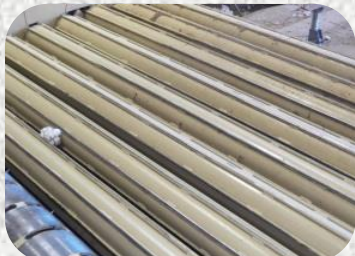
*Color Sensors are mounted below Transfer Roller on 6" centers across the bed and aimed upward. When any color wrap is detected, the machine sounds an alarm and stops. Transfer Roller is reversed to remove wrap. This feature minimizes contamination from wrap into gin machinery. All Detector Lens are kept clean by an air blast every minute.*



**SHELL, PICKER & TRANSFER ROLLER ASSEMBLIES**



**SCRAPER SYSTEM**



**FEED ROLLERS**



**DRIVE SYSTEM FOR PICKER, SHELL, & FEED ROLLERS**



**DRIVE SYSTEM FOR TRANSFER ROLLER**



**PLC & VFD DRIVE PANELS**



**SLITTER KNIVES & KNIFE ARM**



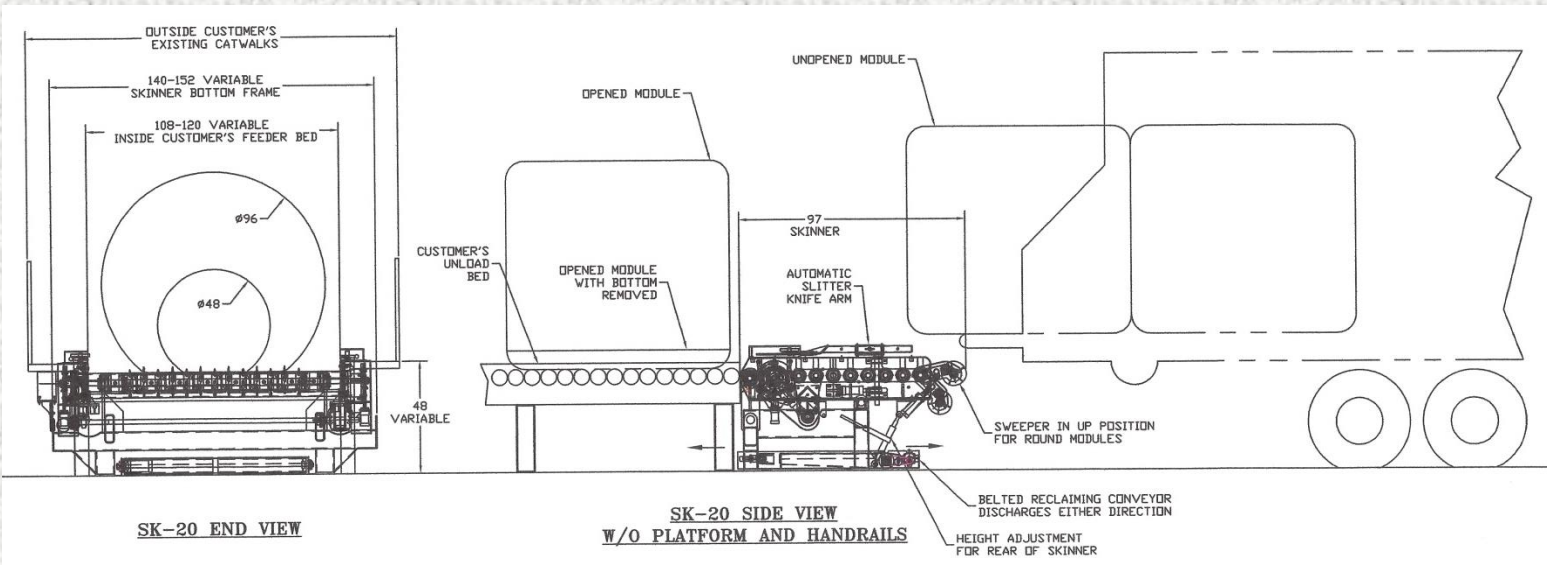
**SWEEPER ASSEMBLY**



**MANUAL HEIGHT ADJUSTMENT**



**PUSH BUTTON SYSTEM W/TOUCH SCREEN**



**MORE PRODUCTS MFG & SOLD BY COTTON MACHINE WORKS, LLC.  
DESIGNED BY CTC DESIGN, INC.  
MODZILLA FAMILY OF ROUND MODULE OPENERS**

**RMO-20 Standard Style**

*(Chain & Roller Bed Type Feeders)*

**RMO-20 CW Crosswise Style**

*(Chain & Roller Bed Type Feeders)*

*Designed for narrow feeders*

*No MONEY wasted to widen beds*

**RMO-20 TM Track Mounted Style**

*(Walking Floor Type Feeders)*

**RMO-20 TH Traveling Head Style**

*(Single & Double Traveling Head Feeders)*

**RMO-20 SF Short Frame Style**

*(Chain & Roller Bed Fed Type Feeders)*

Videos, pictures, and brochures available @ <http://www.cottonmachineworks.com>