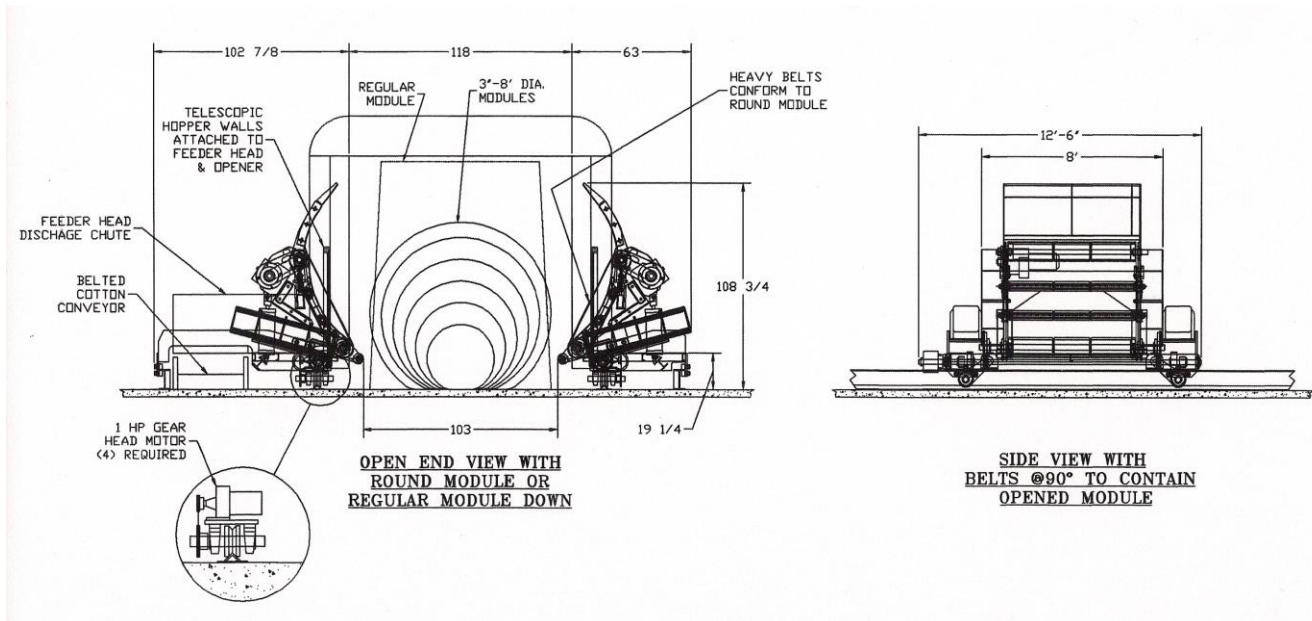




## TRAVELING HEAD ROUND MODULE OPENER

U.S. PATENT APPROVED 9/21/11  
14 CLAIMS AWARDED

### MODEL RMO-20TH



#### ADVANTAGES:

- *Mounted on existing feeder track*
- *Single Operator*
- *Compact design fits in less space*
- *No hydraulics*
- *Requires no special foundation*
- *Heavy duty belts conform to round modules thus keeping cotton dense yielding consistent feed rates*
- *Belts tilt up in feed position to form side walls preventing spillage*
- *Heavy duty frame*
- *Blowout system prevents cotton build-up underneath belts*
- *Priced well below competitors*
- *Simple to install & operate*

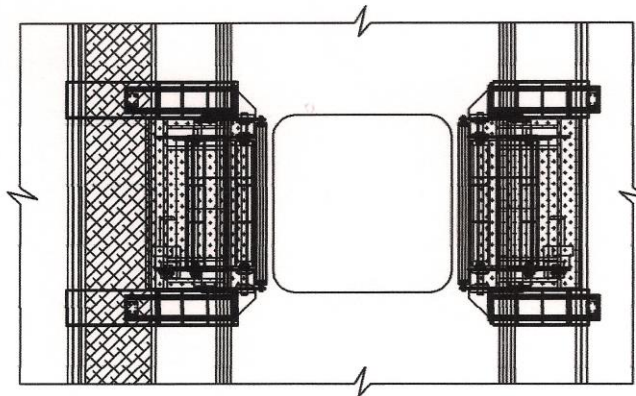
#### SPECIFICATIONS:

- *Driven by (4) 5 HP, (4) 1 HP Gear Head Motors & (4) 8" DIA air cylinders @ 75 PSI*
- *Optional RFID tag reader locates inner tail virtually eliminating the possibility of plastic contamination*
- *80-100 BPH capacity*
- *Belt Safety factor = 10 to 1*
- *Gin Friendly with Standard Components made in the USA*

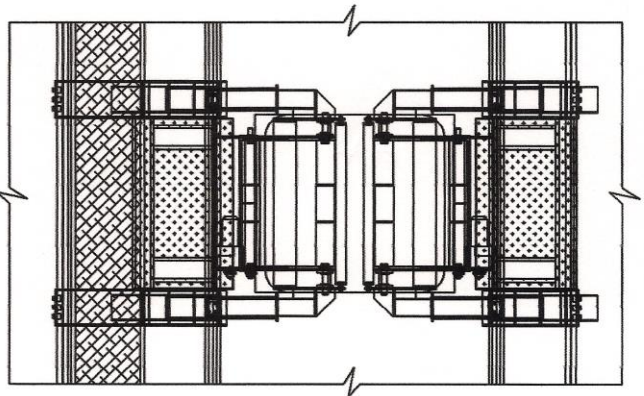
## COTTON MACHINE WORKS, LLC

Tel: (229) 273-1374 Cell: (229) 938-4670 E-Mail: c990@bellsouth.net

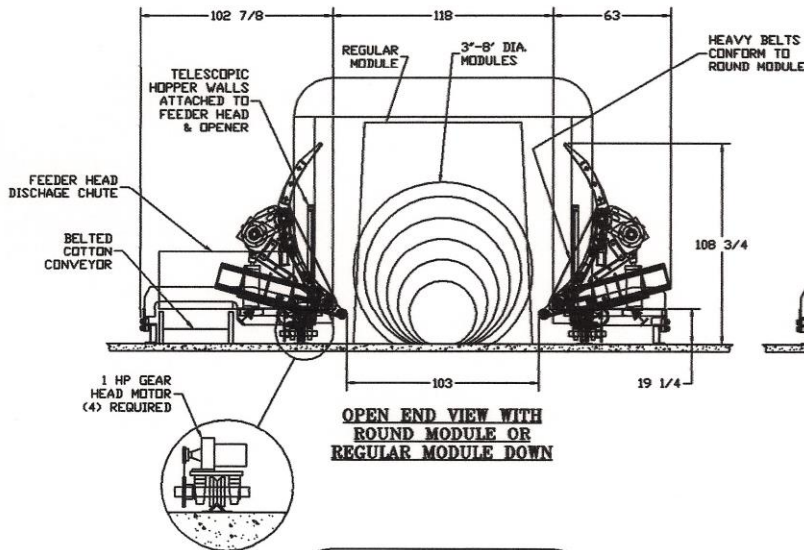
www.cottonmachineworks.com



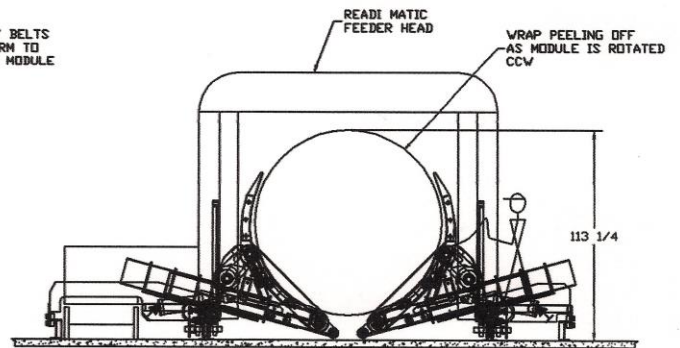
**OPENED TOP VIEW  
WITH MODULE DOWN**



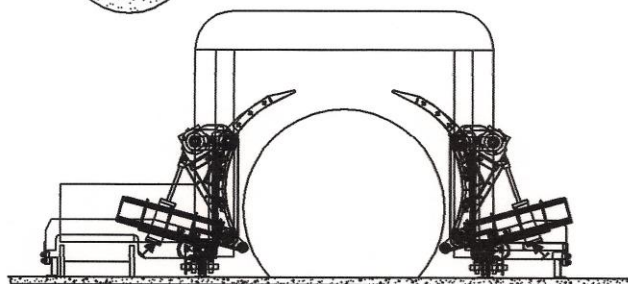
**CLOSED TOP VIEW  
WITH MODULE LIFTED**



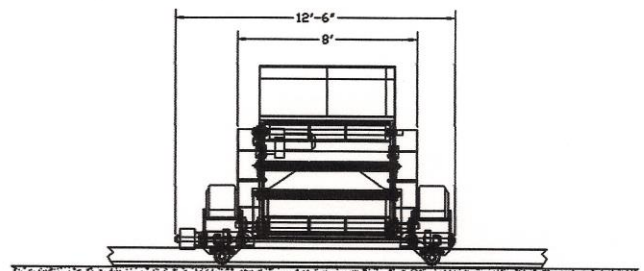
**OPEN END VIEW WITH  
ROUND MODULE OR  
REGULAR MODULE DOWN**



**CLOSED END VIEW WITH MODULE LIFTED  
ROTATE CW & SCAN FOR INNER TAIL. STOP.  
MANUALLY SLIT COVER THRU SLOT IN BACK  
STOP. & ROTATE CCW TO REMOVE**



**END VIEW WITH  
BELTS @90° TO CONTAIN  
OPENED MODULE**



**SIDE VIEW WITH  
BELTS @90° TO CONTAIN  
OPENED MODULE**

## COTTON MACHINE WORKS, LLC

Tel: (229) 273-1374 Cell: (229) 938-4670 E-Mail: c990@bellsouth.net

www.cottonmachineworks.com